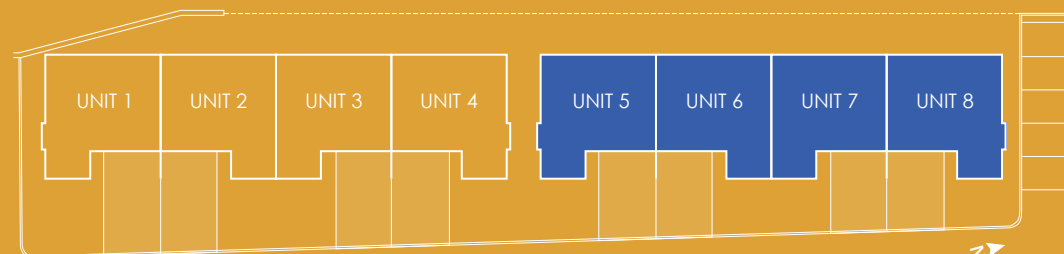


# THE MARINA

WATERFRONT TOWNS



UNITS 5-8

SQ. FT.

2486

BEDROOMS

3

BATH

3 1/2

OPTIONAL

ROOFTOP PATIO\*

INCLUDES

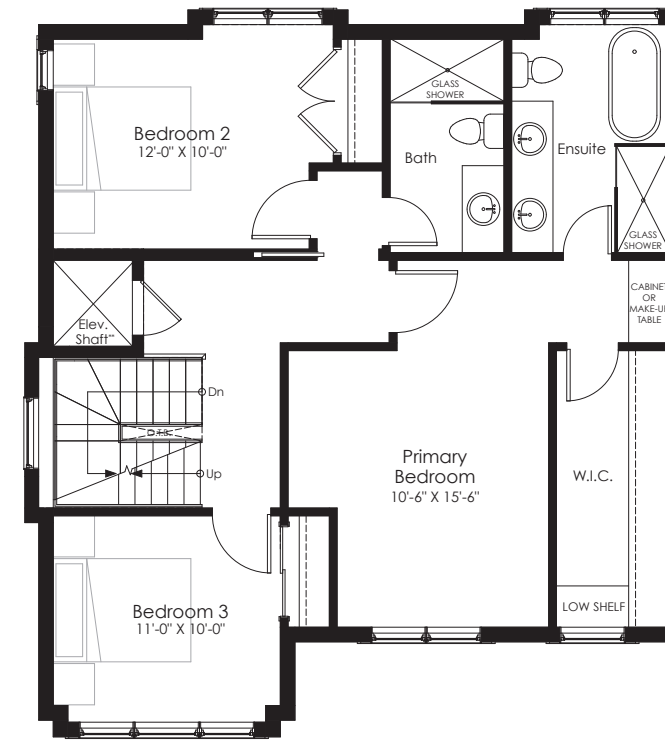
4 PARKING SPACES†

†ADDITIONAL PARKING AVAILABLE

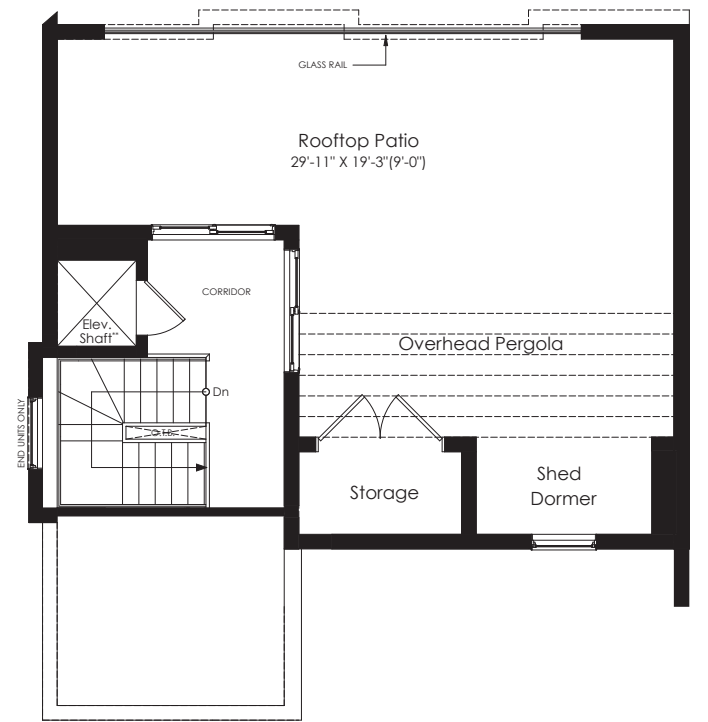


BOAT OWNERS

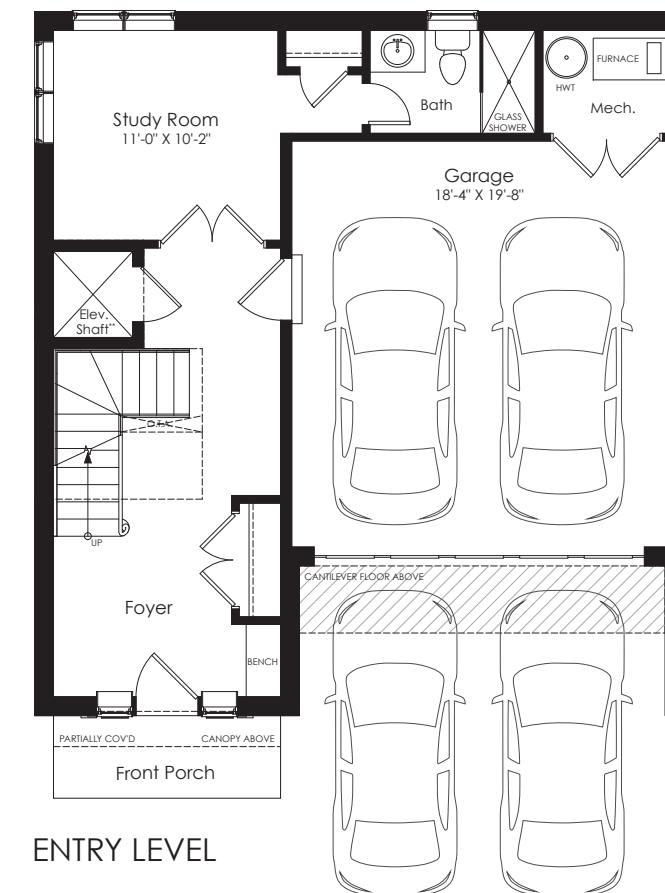
PRIORITY ACCESS TO ANNUAL BOAT SLIP LEASE



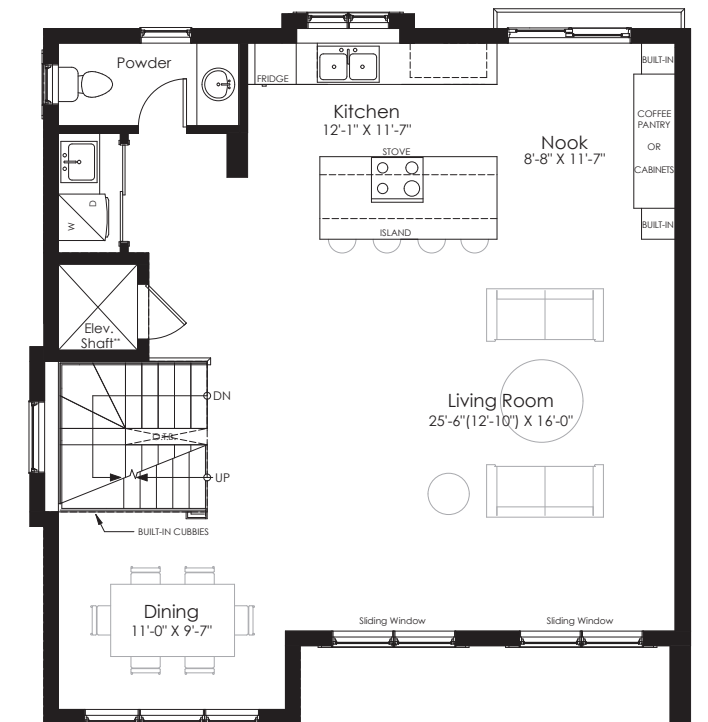
SECOND FLOOR§  
§Town Second Floor Plans are interchangeable.



ROOF TOP FLOOR\*  
125 sq.ft. Indoor Area  
500 sq.ft. Outdoor Area



ENTRY LEVEL



MAIN FLOOR

THE MARINA | 2486 SQ.FT.

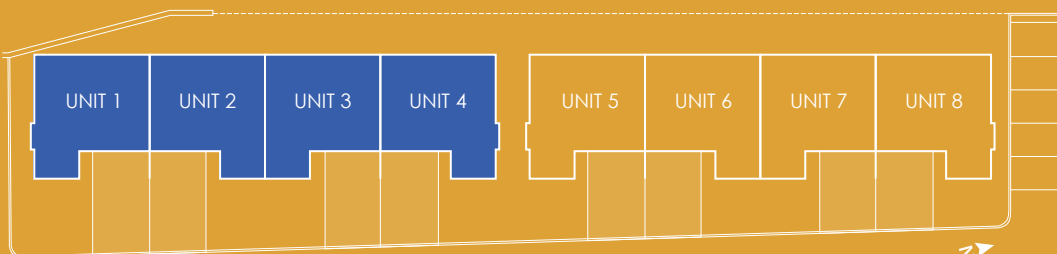
3 BEDROOM / 3 1/2 BATH / OPTIONAL ROOFTOP PATIO\*

†One (1) guest parking space, and three (3) homeowner parking spaces.  
\*By choosing the Roof Top Floor, there will be an additional cost to the plan. Plan customization may be available at an additional cost, ask our agent for details.  
\*\*If an Elevator is not purchased at additional cost, the shaft spaces on each respective floor will be finished as storage space. The floor plans and elevations shown are pre-construction plans and may be revised or improved as necessitated by architectural controls and the construction process. The measurements adhere to the rules and regulations of the TARION Warranty Corporation's official method for the calculation of floor area. Materials, specifications and floor plans are subject to change without notice. All renderings are artist's concept only. Actual usable floor space may vary from the stated floor area. All options shown are upgrades. E.&O.E. February 2023. The Marina



# THE HARBOUR

WATERFRONT TOWNS



UNITS 1-4

SQ. FT.

2638

BEDROOMS

3

BATH

3 1/2

OPTIONAL

ROOFTOP PATIO\*

INCLUDES

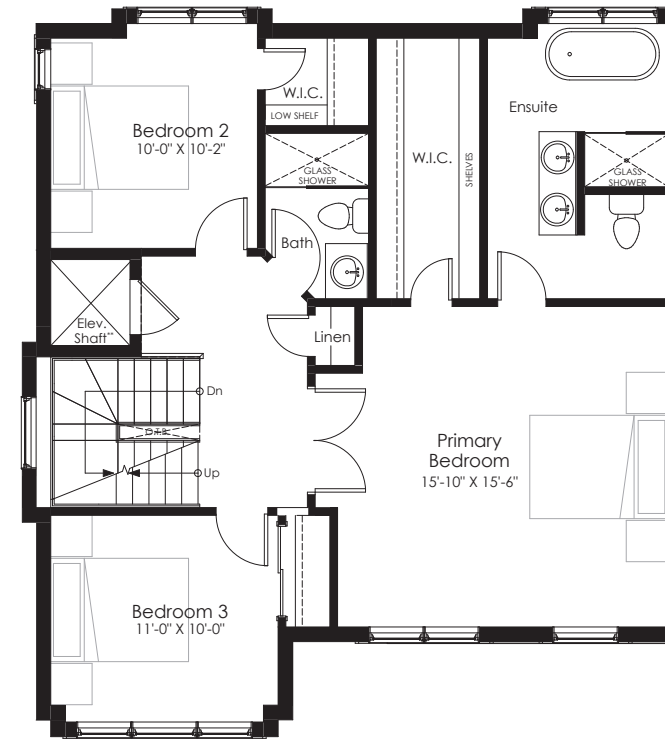
3 PARKING SPACES†

†ADDITIONAL PARKING AVAILABLE



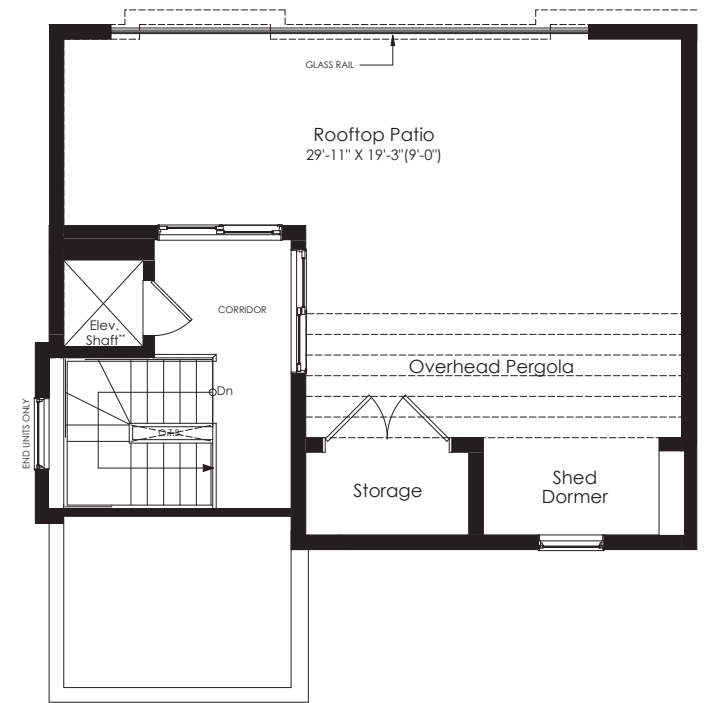
BOAT OWNERS

PRIORITY ACCESS TO ANNUAL BOAT SLIP LEASE



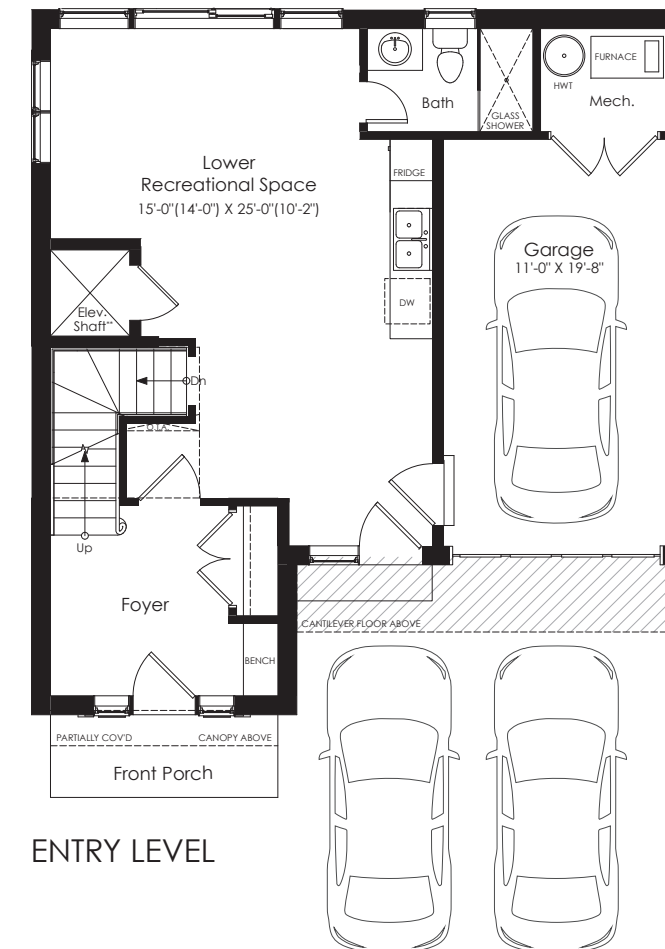
SECOND FLOOR§

§Town Second Floor Plans are interchangeable.

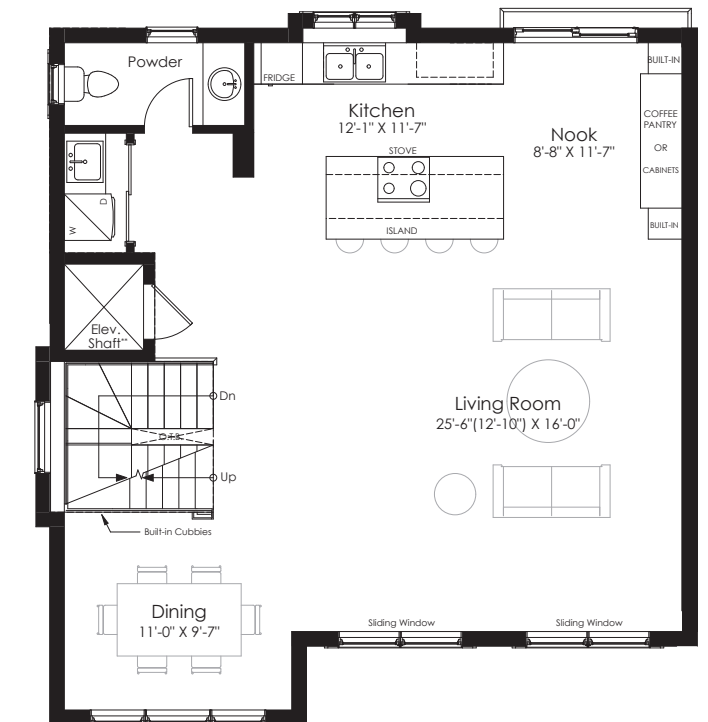


ROOF TOP FLOOR\*

125 sq.ft. Indoor Area  
500 sq.ft. Outdoor Area



ENTRY LEVEL



MAIN FLOOR

## THE HARBOUR | 2638 SQ. FT.

3 BEDROOM / 3 1/2 BATH / OPTIONAL ROOFTOP PATIO\*

†One (1) guest parking space, and two (2) homeowner parking spaces.

\*By choosing the Roof Top Floor, there will be an additional cost to the plan. Plan customization may be available at an additional cost, ask our agent for details.

\*\*If an Elevator is not purchased at additional cost, the shaft spaces on each respective floor will be finished as storage space. The floor plans and elevations shown are pre-construction plans and may be revised or improved as necessitated by architectural controls and the construction process. The measurements adhere to the rules and regulations of the TARION Warranty Corporation's official method for the calculation of floor area. Materials, specifications and floor plans are subject to change without notice. All renderings are artist's concept only. Actual usable floor space may vary from the stated floor area. All options shown are upgrades. E.&O.E. February 2023. The Harbour

